

Eden Local Plan 2014-2032

Revised Allocations Maps

Market Town and Main Towns

July 2017



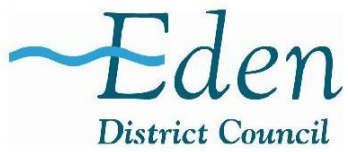
Contents

| | |
|----------------------|---|
| Introduction | 3 |
| Alston | 4 |
| Appleby | 5 |
| Kirkby Stephen | 6 |
| Penrith East | 7 |
| Penrith North | 8 |

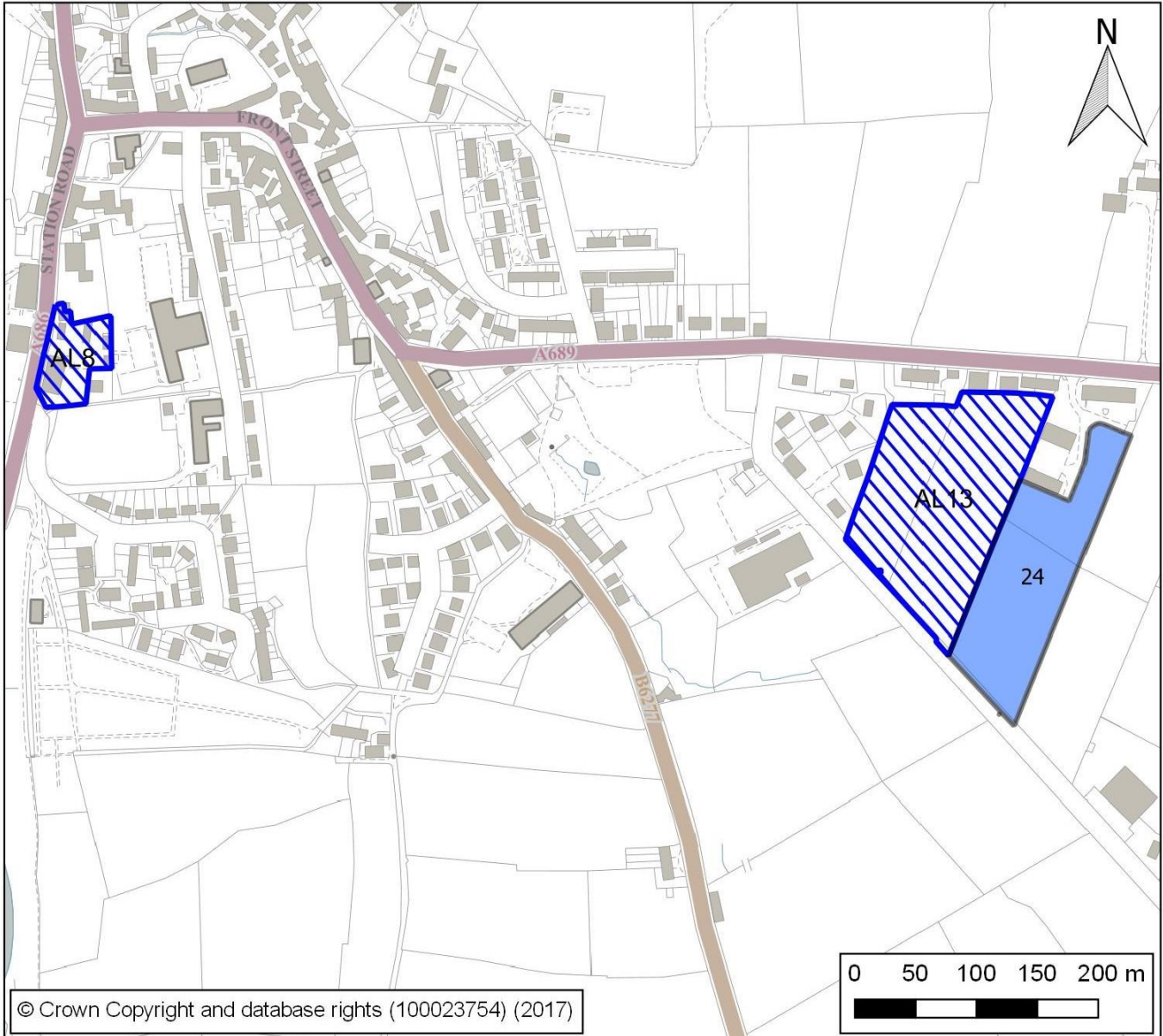
Introduction

This document forms part of the Schedule of Proposed Main Modifications for the Eden Local Plan. It contains the maps for the market town and main towns identifying revised allocations including potential future growth sites.

Alston



Revised Allocations
Alston

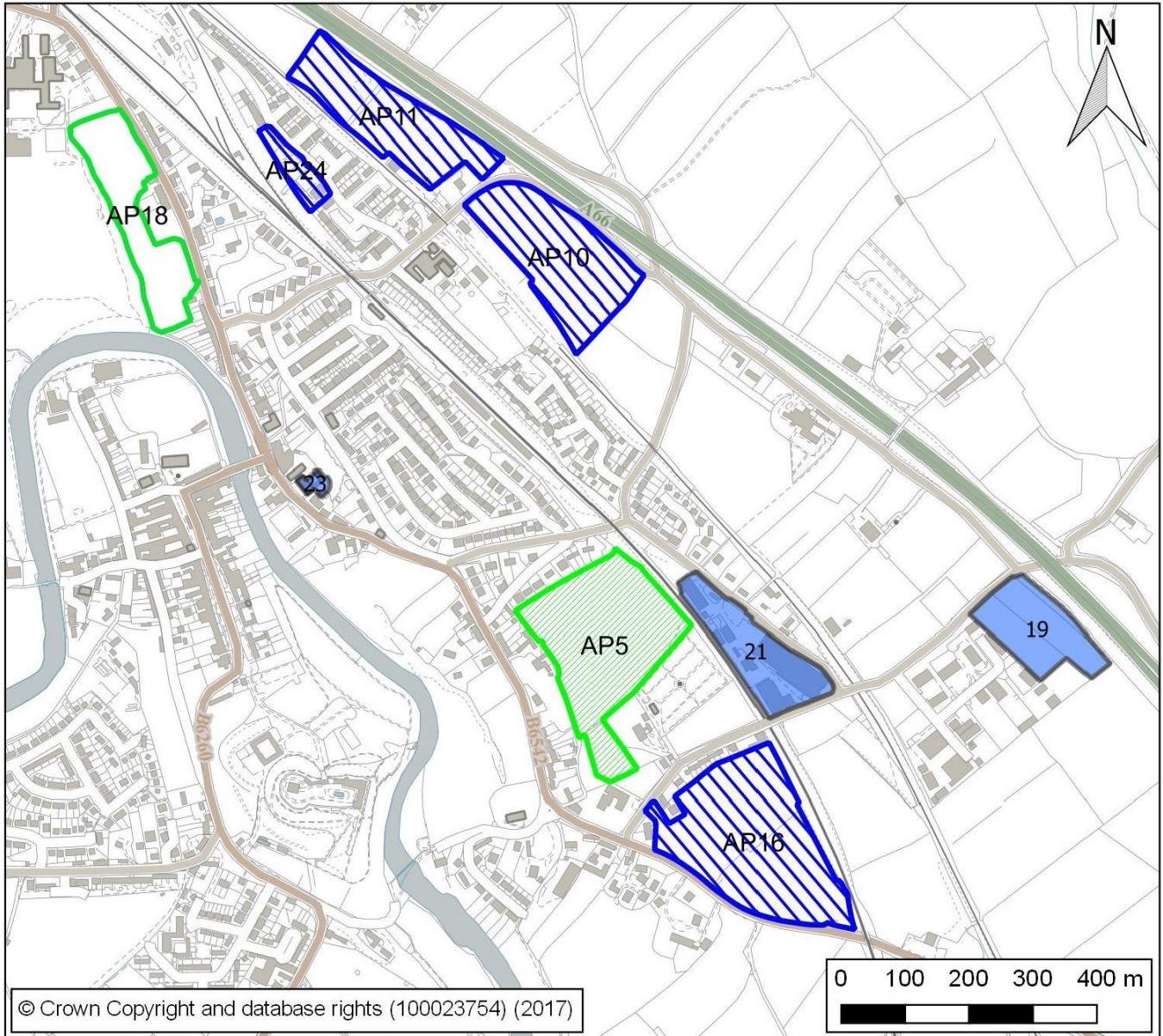


Date: 11 July 2017
Scale: 1:5000@A4
Drawn by: KH/AD
Sites: AL8, AL13

Key





- Housing Allocation Sites
- Employment Allocation Sites

Revised Allocations
Appleby

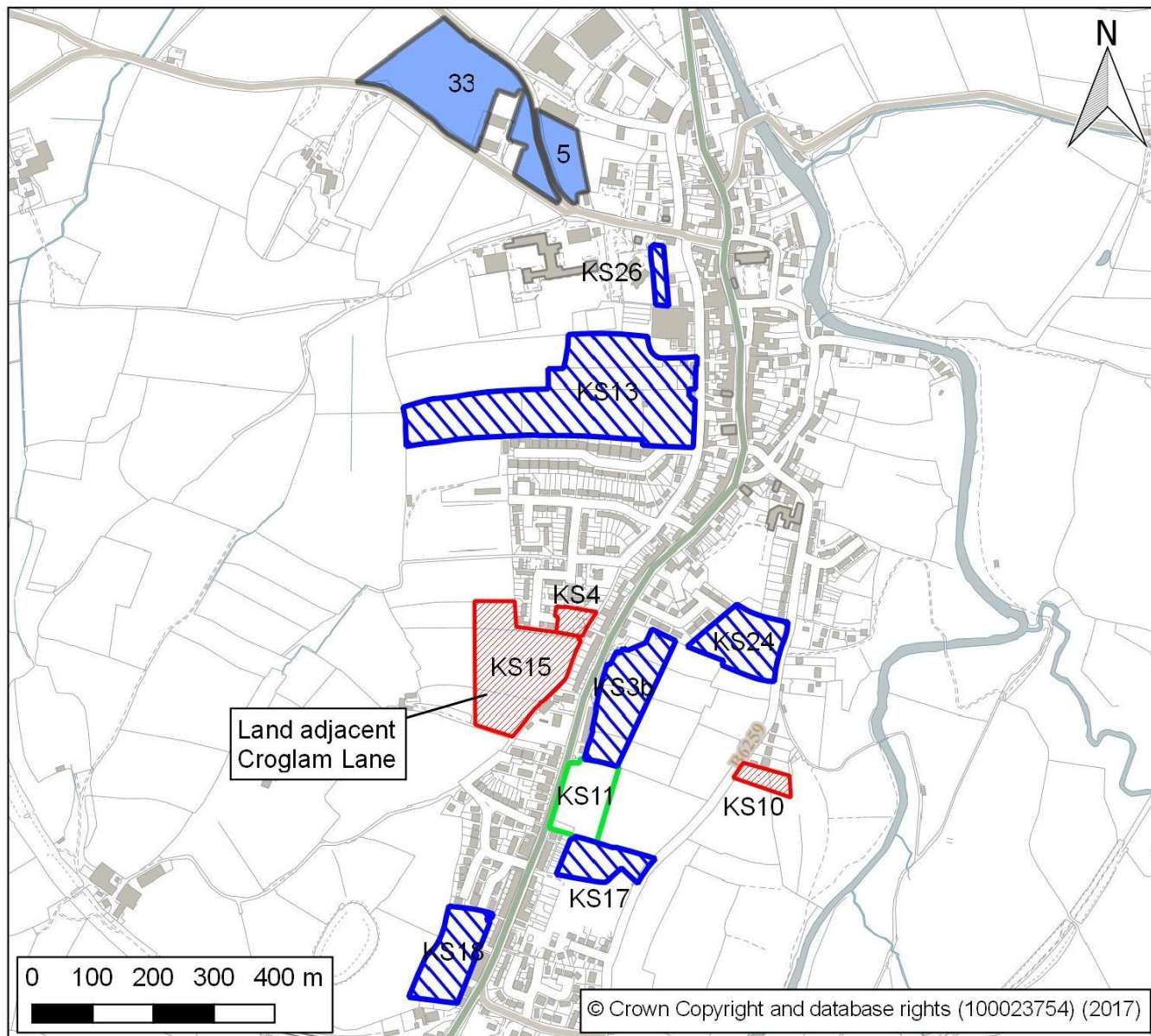


Date: 13 July 2017
Scale: 1:9500@A4
Drawn by: KH/AD
Sites: AP10, AP11, AP16, AP18, AP24

Key

-  Housing Allocation Sites
-  Under Construction
-  Potential Future Growth Site
-  Employment Allocation Sites

Revised Allocations
Kirkby Stephen

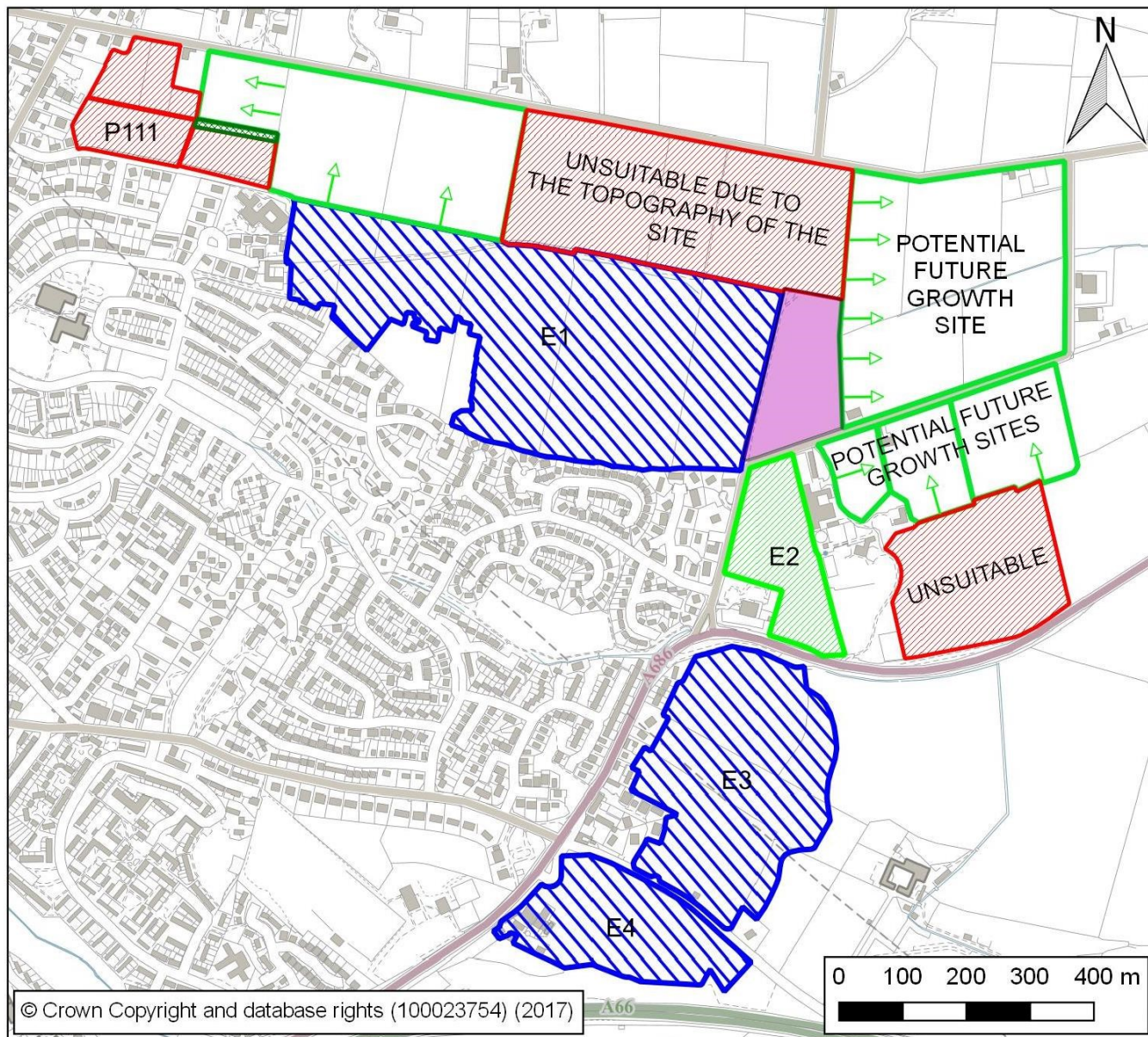


Date: 3 July 2017
Scale: 1:10,000@A4
Drawn by: KH/AD
Sites: KS3b, KS11, KS13, KS17, KS18, KS24, KS26

Key

- Housing Allocation Sites
- Unsuitable Housing Sites
- Potential Future Growth Sites
- Employment Allocation Sites

Revised Allocations - Future Growth Areas
Penrith East

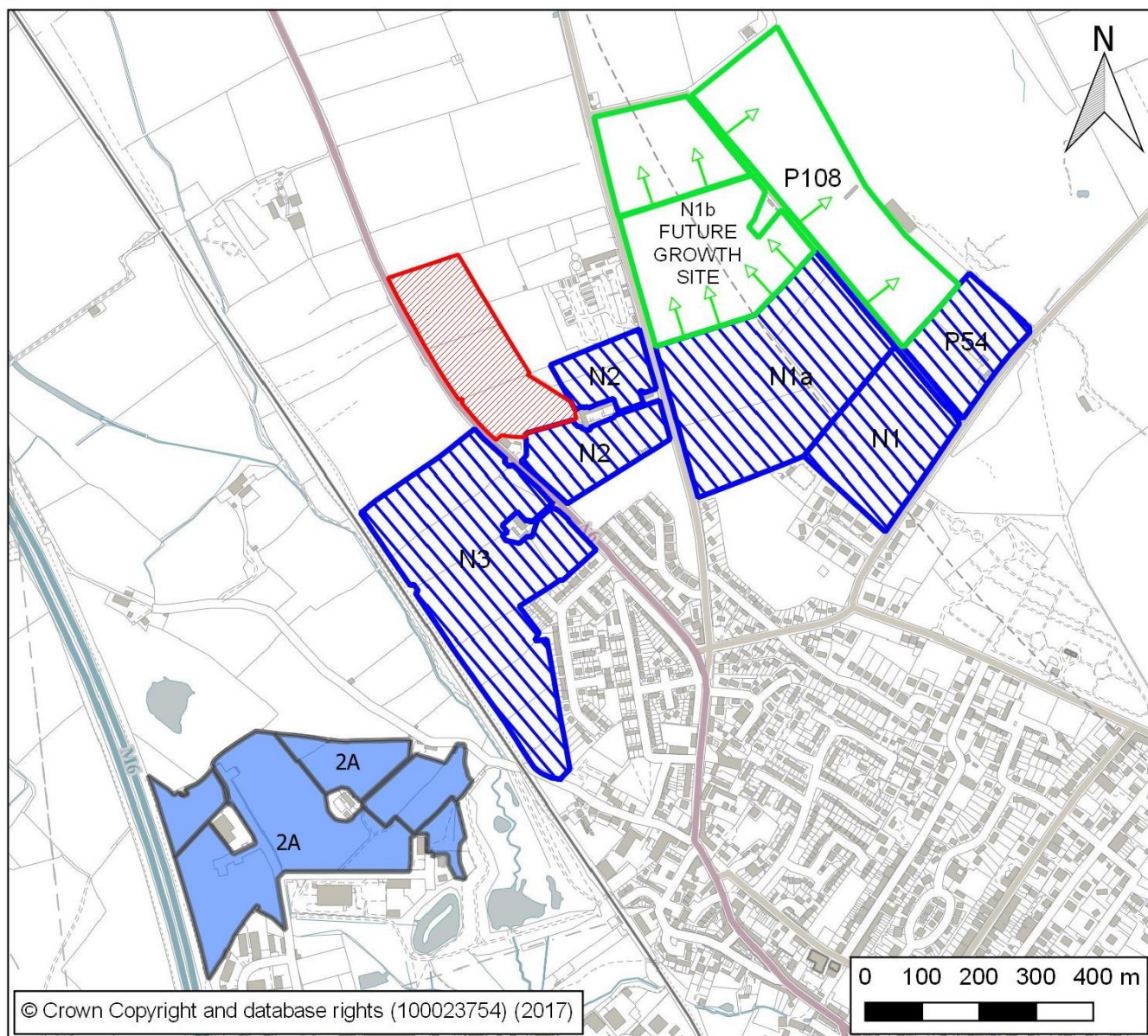


Date: 3 July 2017
Scale: 1:9500@A4
Drawn by: KH/AD
Sites: E1, E3 and E4

Key

- Housing Allocation Sites
- Unsuitable Housing Sites
- Under Construction
- Potential Future Growth Sites
- Strong Tree Belt
- New Educational Facility

Revised Allocations - Future Growth Areas
Penrith North



Date: 3 July 2017
Scale: 1:10,600@A4
Drawn by: KH/AD
Sites: N1, N1a, N2, N3 and P54

Key

- Housing Allocation Sites
- Unsuitable Housing Sites
- Potential Future Growth Sites
- Employment Allocation Sites