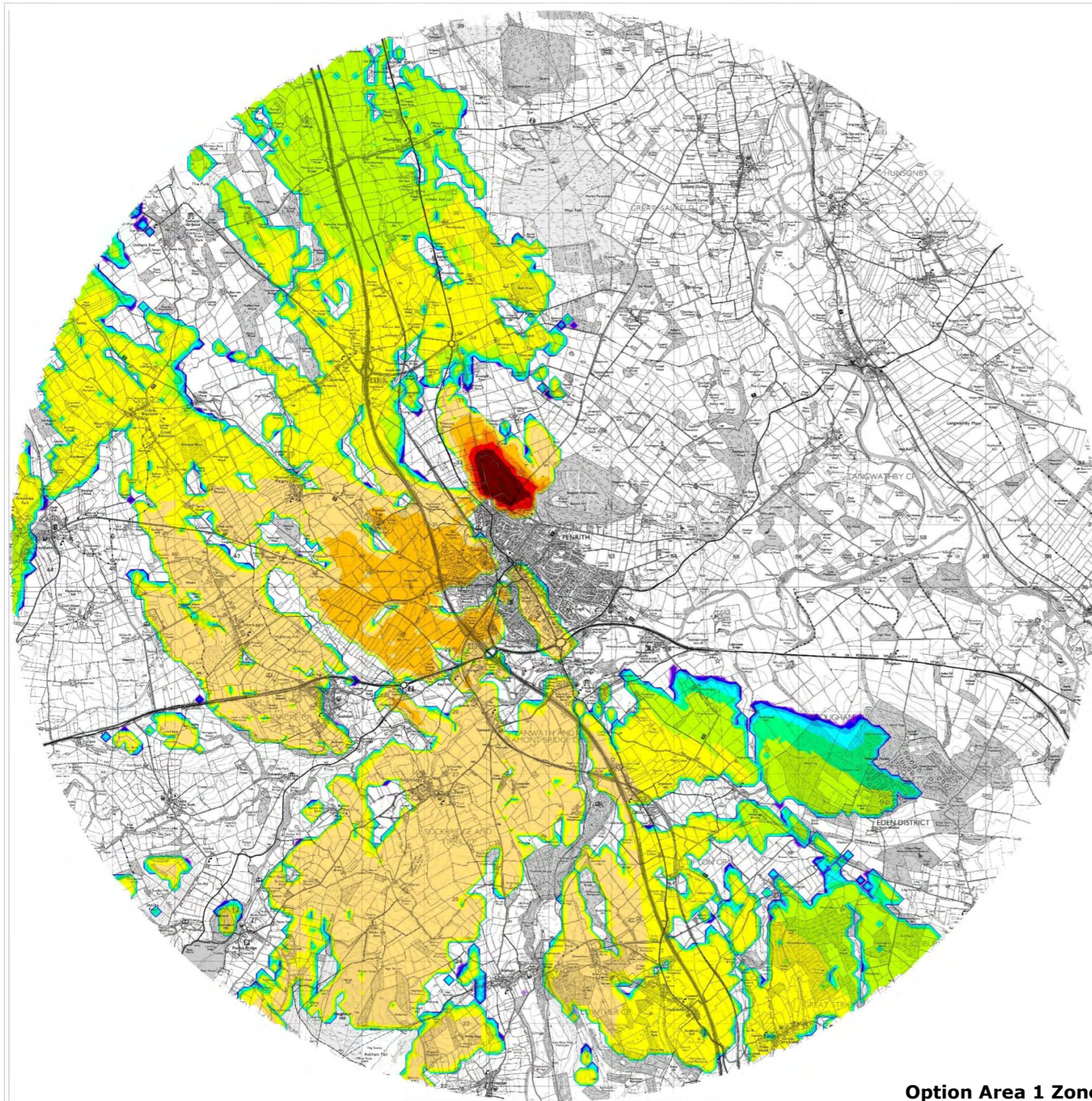


**Option Area 1 Illustrative Site Photos – site extent shaded red.**





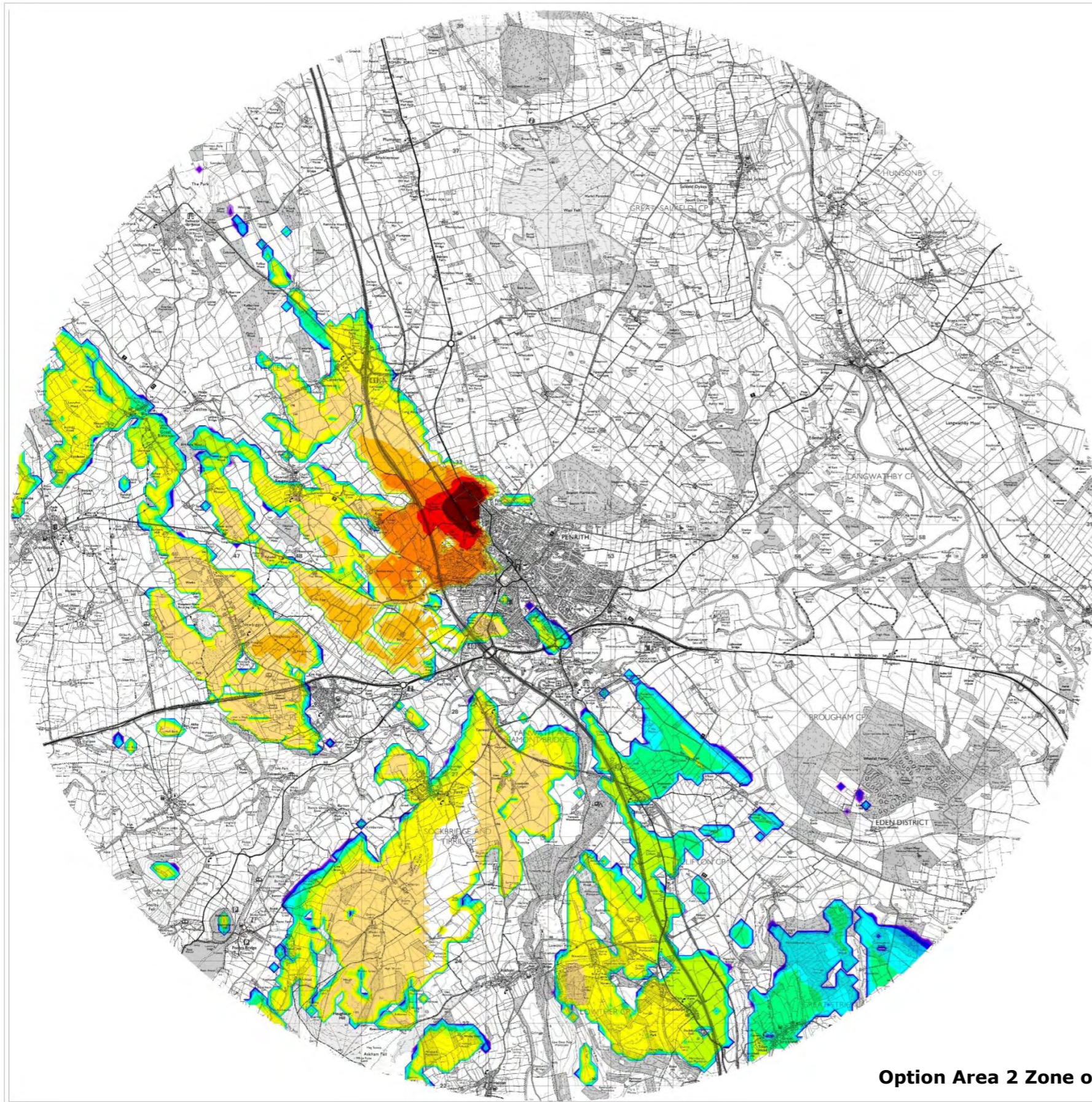
**LEGEND**

- less than 4.096 degrees visible
- less than 2.048 degrees visible
- less than 1.024 degrees visible
- less than 0.512 degrees visible
- less than 0.256 degrees visible
- less than 0.128 degrees visible
- less than 0.064 degrees visible
- less than 0.032 degrees visible
- less than 0.016 degrees visible
- less than 0.008 degrees visible
- less than 0.004 degrees visible
- less than 0.002 degrees visible
- less than 0.001 degrees visible

**Option Area 1 Zone of Theoretical Visibility Mapping**

**Option Area 2 Illustrative Site Photo – site extent shaded red (middle layer).**





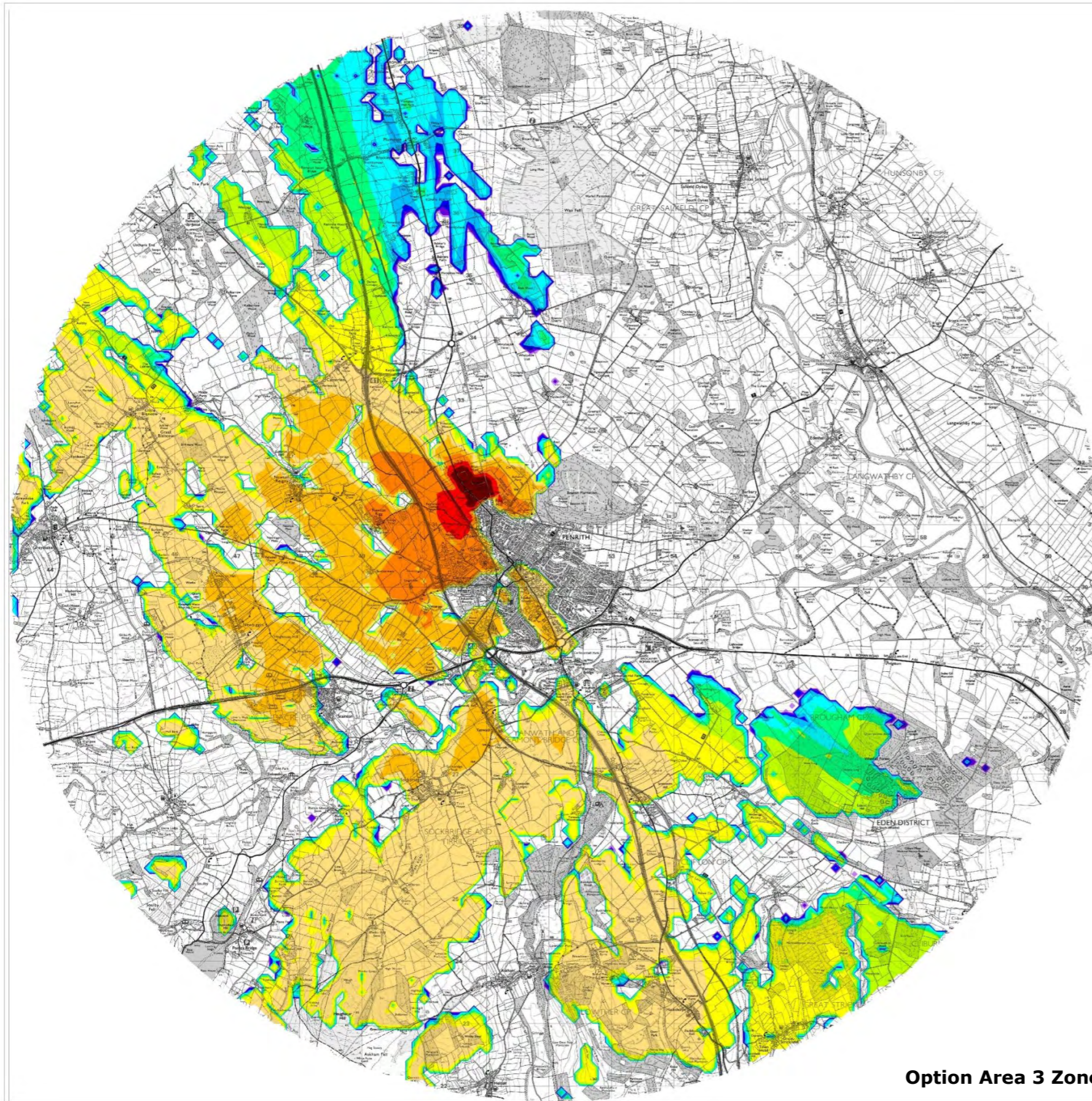
**LEGEND**

- less than 4.096 degrees visible
- less than 2.048 degrees visible
- less than 1.024 degrees visible
- less than 0.512 degrees visible
- less than 0.256 degrees visible
- less than 0.128 degrees visible
- less than 0.064 degrees visible
- less than 0.032 degrees visible
- less than 0.016 degrees visible
- less than 0.008 degrees visible
- less than 0.004 degrees visible
- less than 0.002 degrees visible
- less than 0.001 degrees visible

**Option Area 2 Zone of Theoretical Visibility Mapping**

**Option Area 3 Illustrative Site Photos – site extent shaded red.**





**LEGEND**

- less than 4.096 degrees visible
- less than 2.048 degrees visible
- less than 1.024 degrees visible
- less than 0.512 degrees visible
- less than 0.256 degrees visible
- less than 0.128 degrees visible
- less than 0.064 degrees visible
- less than 0.032 degrees visible
- less than 0.016 degrees visible
- less than 0.008 degrees visible
- less than 0.004 degrees visible
- less than 0.002 degrees visible
- less than 0.001 degrees visible

**Option Area 3 Zone of Theoretical Visibility Mapping**